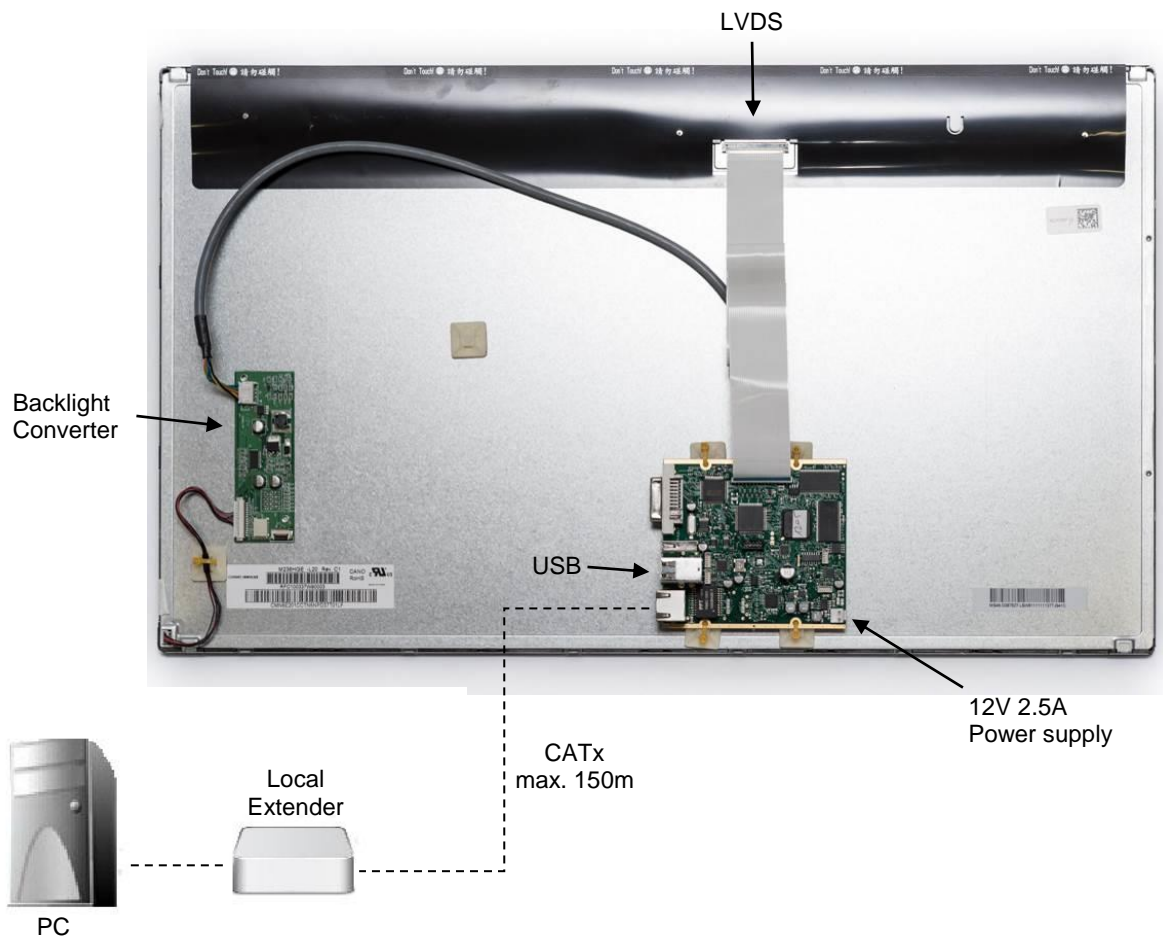


# LVDS Option

Part No: 6843

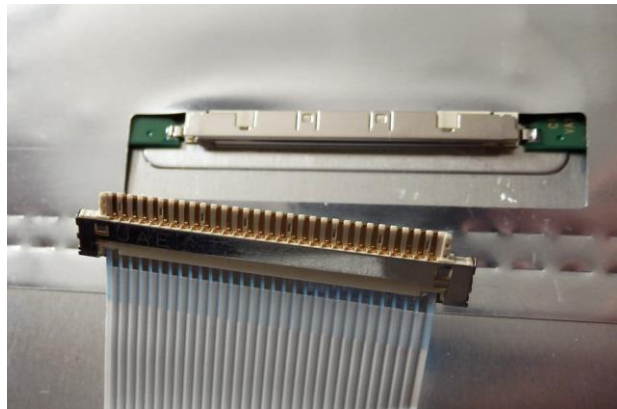
The slim solution for HMI with many applications.  
for MVX KVM - Extender



The LVDS Option - a special variant of our extender for individual HMI solutions. This slim and compact design is often used in industry, medical technology, digital signage, home automation and other areas.

- ➔ The LVDS Option allows the extender to replace the electronics of the monitor and directly control the TFT panel. A 30-pin LVDS interface controls the panel while a 5-pin socket is connected to the backlight controller.
- ➔ The MVX Extender replaces the control electronics of the monitor and in doing so results in a very slim compact design
- ➔ Provides panel power supply lines at 3, 3V, 5V and 12 V
- ➔ Max resolution of 1920 x 1200 at 60 Hz
- ➔ Backlight control via on-screen display
- ➔ Depending on the desired resolution the appropriate DDC EDID data is provided to the PC.
- ➔ A variant without the USB sockets is available upon request. This reduces the entire height of the board to 10 mm.
- ➔ The LVDS Option is available for fibre and CAT extenders, not fitted by default and must be requested at the time of ordering the extenders. This Option can also be integrated in to the kvm-tec Matrix Switching System.

Display Interface	
Pin	J5000
Molex 52808-3070	
1	RXO0-
2	RXO0+
3	RXO1-
4	RXO1+
5	RXO2-
6	RXO2+
7	GND
8	RXOC-
9	RXOC+
10	RXO3-
11	RXO3+
12	RXE0-
13	RXE0+
14	GND
15	RXE1-
16	RXE1+
17	GND
18	RXE2-
19	RXE2+
20	RXEC-
21	RXEC+
22	RXE3-
23	RXE3+
24	GND
25	NC
26	NC
27	NC
28	+U Display
29	+U Display
30	+U Display



Backlight Interface	
Pin	J4000
JST B5B-PH-K-S(LF)(SN)	
1	12V
2	GND
3	BL_ON
4	DIM 0-5V
5	GND



x