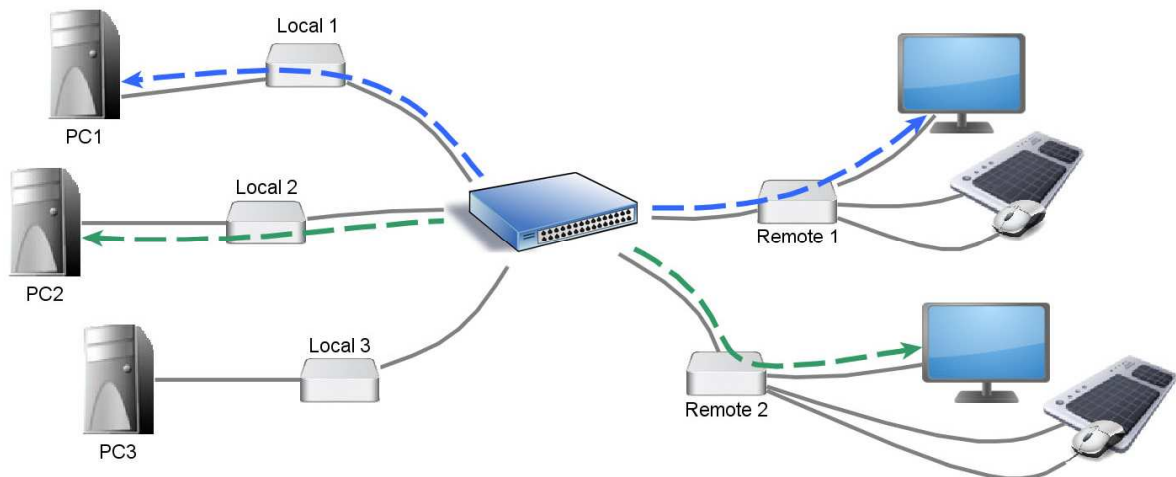


Switching Option

The Total Connection

Part No. 6133

For KVM - Extender series SVX / MVX / PROVX



The Switching Option turns our SVX Smartline, MVX Masterline and PROVX Profiline extenders in to the perfect KVM matrix switch connected by a standard over-the-counter network switch.

- ➔ Multiple PCs can be controlled from a single workstation
- ➔ Multiple workstations can be connected with multiple PCs – max. 48 ports
- ➔ Dual- and multi-head support for up to 10 monitors
- ➔ Switch via the on-screen menu, hotkeys or over external interfaces such as RS232 or Ethernet
- ➔ convenient password system and user-rights management for increased security
- ➔ Users can be put in groups
- ➔ Automatically switch to a backup PC if primary PC goes down (by configuration)
- ➔ Switching is instant
- ➔ Distributed intelligence across every endpoint
- ➔ Sharing mode
- ➔ Perfect video transmission with minimal latency
- ➔ Name identification – if connections are broken or reconnected to a different port, the system will stay correctly configured – making for straightforward installation
- ➔ A mixture of VGA and DVI video signals can be used
- ➔ Mix and match – a mixture of fibre and copper devices as well as different device types can be connected together
- ➔ One license per workstation is required
- ➔ Amazing value for money

MATRIX SWITCH

- ➔ This system can be used to put together a KVM matrix switch.
- ➔ A large number of computers can be connected to a large number of monitors/workstations, allowing the user to connect to a specific PC with the push of a button.
- ➔ The display contents is sent through without any delay and the PC can be controlled by the user with a mouse, keyboard, touchscreen or a wide range of USB devices.
- ➔ The switching system is very flexible in its configuration, and depending upon the application different user rights Users, Master Users and Admins can be configured.

MULTIHEAD

- ➔ Multiple monitors can be grouped together so that computers with multi-head displays can switch together as a single unit.

SHARING MODE

- ➔ A sharing mode is also available – multiple users can view the same screen at once.
- ➔ The switching system is based upon a distributed system which means that every extender device has control over the entire switching system – from every PC you can bring up the on-screen display and make connections to PCs, disconnect PCs and give users and PCs names.
- ➔ You can switch between individual PCs each with their own configurable keyboard shortcut. The system can also be controlled externally. This requires either a spare port on the network switch or a serial port. The use of these ports allow for the status of the entire system to be monitored and managed.
- ➔ The switching system is compatible with the other extender Options such as Sound, VGA, RS232, LVDS or any combination thereof.
- ➔ The matrix switching system has been designed so that it can be set up with very little training. Despite its simplicity it can be configured to use a user/password system to ensure security.
- ➔ If your computer setup includes a PC in reserve the extender can be set up to switch to it automatically if your primary PC goes down.

MASTER VIEW MODE

- ➔ Connection Overview – from one workstation it is possible to connect other workstations to other computers.
- ➔ Whether or not one user can take control of a PC away from another, or if an administrator can take control of a specific PC in case of emergency, can be defined in the settings.

USER PC BINDING

- ➔ A compatibility mode for replacing existing systems. Users can carry on having the same controls as they are used to.

TECHNICAL SPECIFICATIONS

max. no. ports:	48, e.g. 24 PCs and 24 workstations
Network Setup:	for use with a dedicated network via a gigabit switch. Requires port-to-port bandwidth of 1Gbps between every port. IGMP snooping.
Switching:	via Hotkey
Automatically connects:	with default PC after restart.
PC names:	max. 16 symbols long